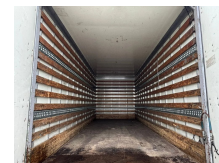


MAN 4x2

Construction	Box body
Year	2007
Axle configuration	4x2
Transmission	Automatic
Mileage	414.800 km
Fuel	Diesel
Emissionclass	Euro 4
Power	132 kW (179 PK)
Gross weight	8.000 kg
Load capacity	2.560 kg
Weight	5.440 kg
Length	830 cm
Width	243 cm
General state	Good



Description

MAN TGL 8.180 4x2

YOM: 2007

KM: 414.800

Automatic Gearbox